



New kit for the ESSENTIAL GLASS range

Sliding door kit for wall mounting, including:

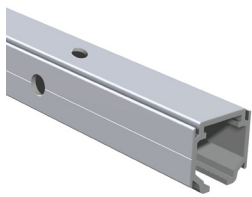


- 1 2m **EXCELLENCE TRACK** in natural aluminum.
- 2 **SV-P70 EASY ACCESSORIES SET** for 70kg with double retaining brake. With ball-bearing rollers for smooth and silent sliding and Easy clamp, characterized by its small size and easy installation as it allows frontal installation.
- 3 2m **PELMET COVER** clipped on to the top track, in black lacquered aluminum finish (80mm).
- 4 **FRAME FLAT**: decorative aluminum strip profiles that give an industrial look to the installation. Easy installation as it is stuck to the glass and supplied with **3M** double-sided adhesive tape.
 - U Channel for perimeter framing, for 10mm glass.
 - Flat profile for internal grids.
- 5 **LATERAL END CAPS**. Wall mounting. In matt black lacquered aluminum.
- 6 **FRAME FLAT BOTTOM GUIDE** in matt black lacquered aluminum.

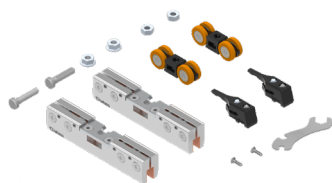
Finish	Code
● BL	0 981 77

● BL | Matt black lacquered aluminium

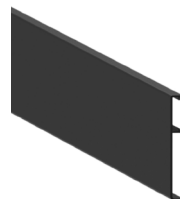
KIT CONTENTS



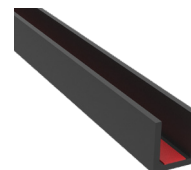
1
x1 **EXCELLENCE** top track.
Wall mounting. 2m



2
x1 **SV-P70 EASY** Fitting set
x2 Retaining stopper



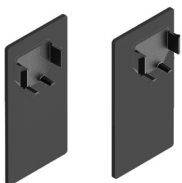
3
x1 **EASY** clamp pelmet
cover. 2m



4
x2 **FRAME FLAT** perimeter
track 10mm. 3m¹



4
x2 **FRAME FLAT** internal
division track. 3m¹



5
x1 **EASY** end cap set. Wall
mounting.



6
x1 **FRAME FLAT** Bottom
guide.



¹ Also sold separately in white and black lacquered finishes.